



ISSUE:

Issued for Permit
08.05.2016

PROJECT: 16-018

Hampton Inn & Suites

New Stanton, PA 15672

OWNER

Stanton Hospitality LLC

52 Blueberry Lane,
Grove City, PA 16127

THESE DRAWINGS ARE FOR REVIEW OF DESIGN AND
 SCOPE OF DISCREPANCY ONLY. NO REPRESENTATION IS
 MADE TO THE ACCURACY OF THE DRAWINGS WITH
 RESPECT TO EXISTING DIMENSIONS OR CONDITIONS. ALL
 CONSULTANTS AND CONTRACTORS MUST VERIFY ANY AND
 ALL DIMENSIONS AND CONDITIONS WHICH ARE CRITICAL
 TO THEIR WORK. THESE DRAWINGS ARE INSTRUMENTS
 OF SERVICE AND ARE THE INTELLECTUAL PROPERTY OF
 JUMAC ARCHITECTS. ANY UNAUTHORIZED USE OR
 REPRODUCTION IS PROHIBITED.

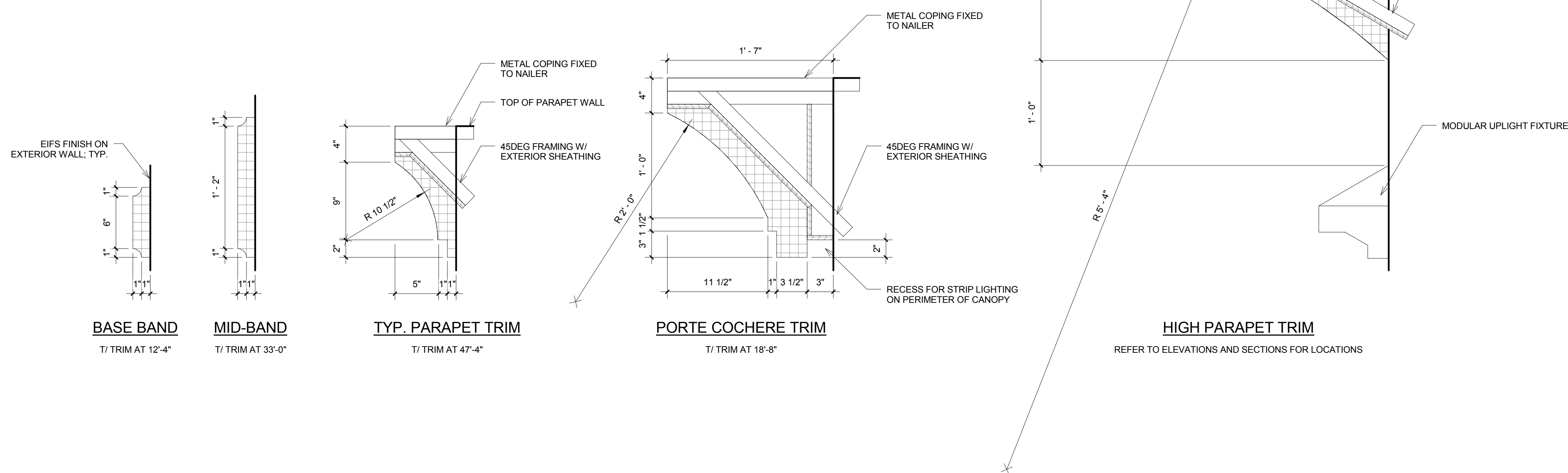
[illegible]

Miscellaneous Details

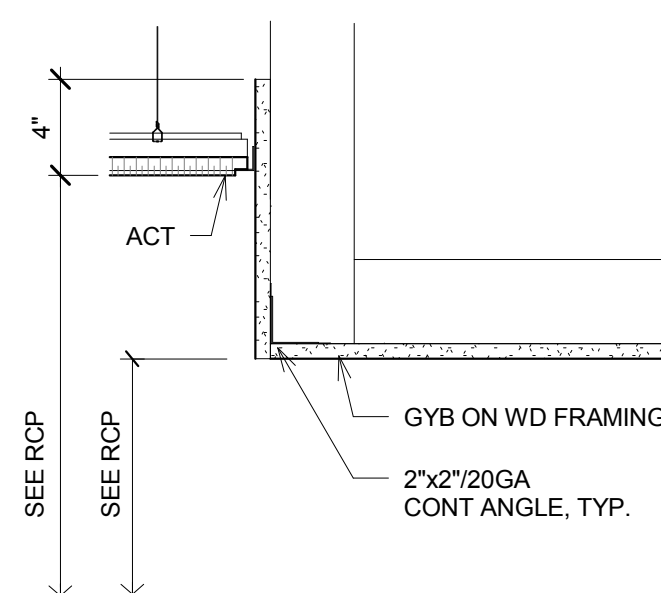
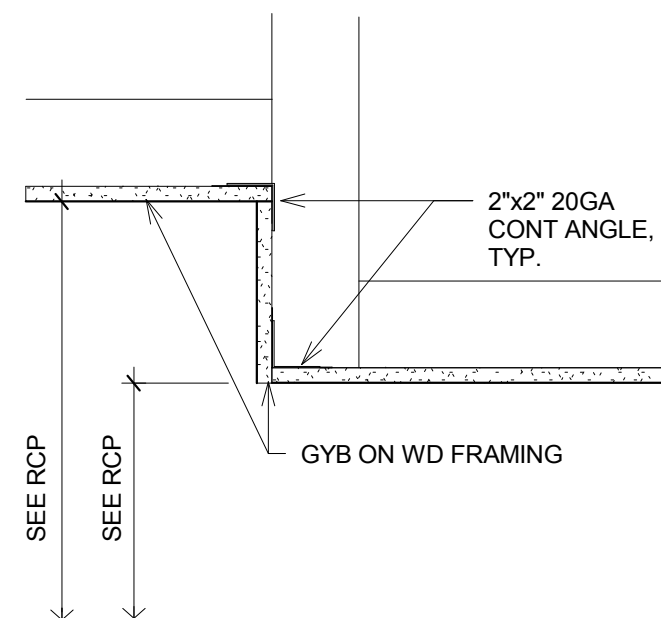
$$1\frac{1}{2}'' = 1'-0''$$

A-805

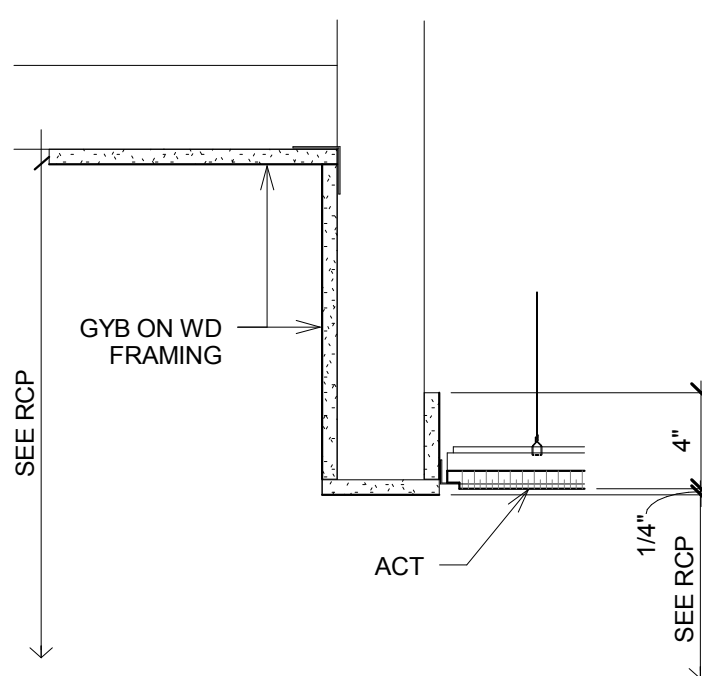
© 2016 JMAC Architects



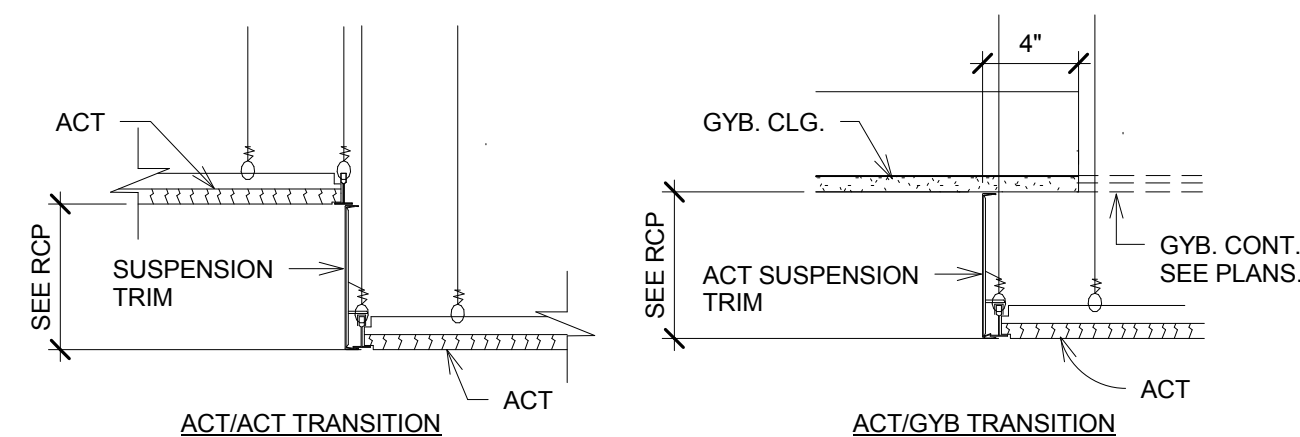
1 Typical Parapet Trim

$$1 \frac{1}{2}'' = 1'-0''$$


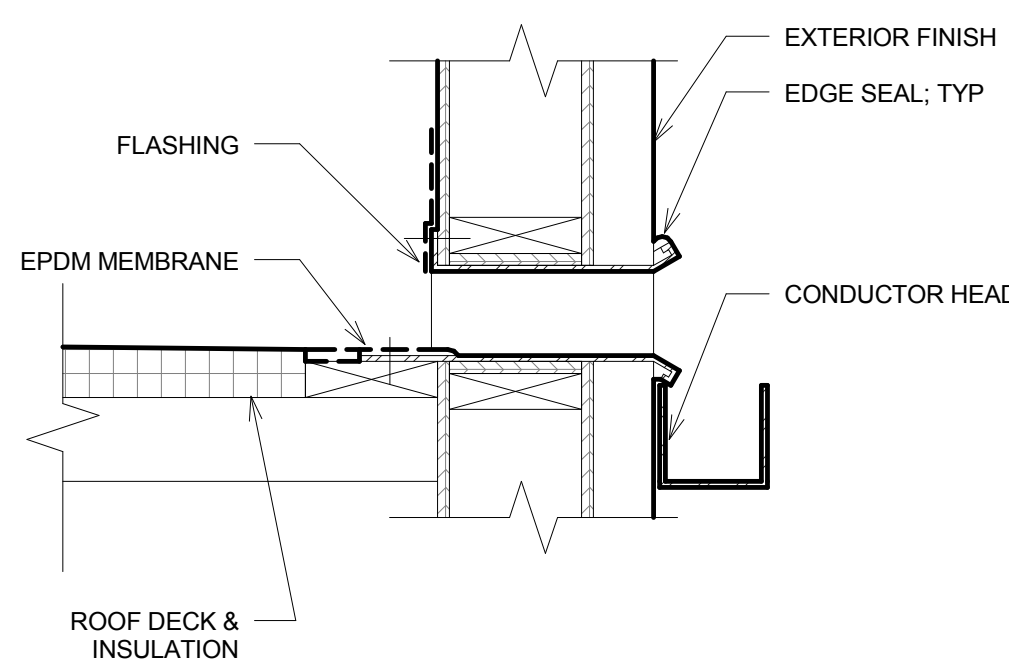
② GWB - GWB Transition

$$1\frac{1}{2}'' = 1'-0''$$


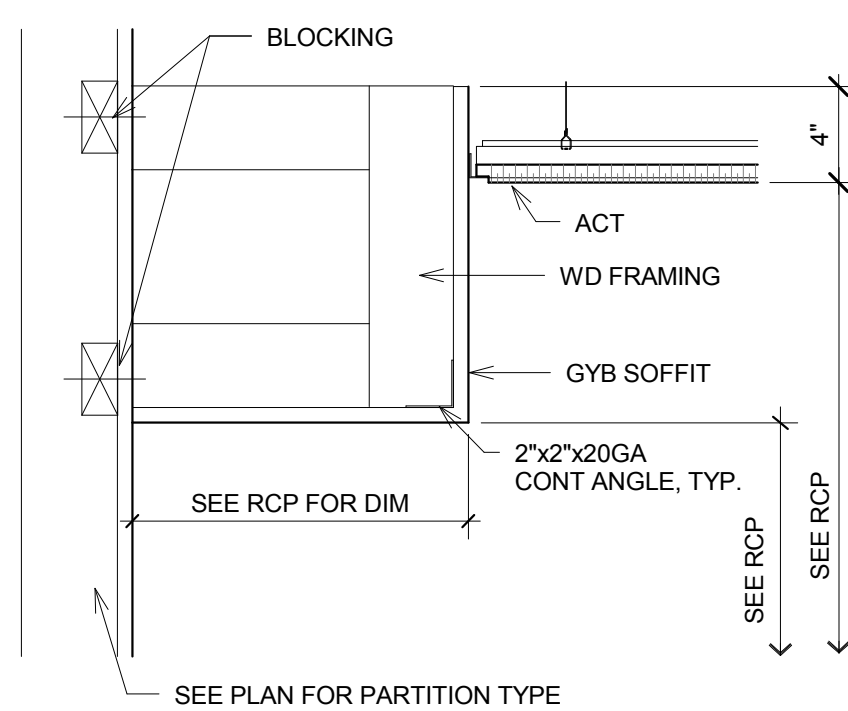
② ACT - GWB Transition

$$1\frac{1}{2}'' = 1'-0''$$


5 Suspension Trim Detail

$$1\frac{1}{2}'' = 1'-0''$$


Bulkhead Detail

$$1\frac{1}{2}'' = 1'-0''$$


7 Scupper Detail

$$1\frac{1}{2}'' = 1'-0''$$